



# fabric

## Judy Ross

Old-world craftsmanship mixes with modern graphic sensibilities to create a new 12-pattern range of hand-embroidered linen. Choose from Gauguinesque **Fauna** (in Sahara, mint, ocean, and pollen) or the spare helixes of **Swim** (in ice blue, seafoam, tangerine, and white). The 58- to 60-inch-wide fabric is available by the yard. 41 Union Square West, Suite 907, New York, NY 10003; 212-842-1705; [judyrosstextiles.com](http://judyrosstextiles.com). **circle 510**



# '90's



1. 1990's Twig, Branch, and Vine Knobs and Pulls **Michael Aguero** for **Modern Objects**, circle 423
2. 1992 1020-349 **Décor de Paris**, circle 424
3. 1993 Rustic Garden Bench **Laura Spector** **Rustic Design**, circle 425
4. 1996 River Rock, Grass, Water, and Mountain Stream **Imagine Tile**, circle 426
5. 1995 Trio Side Table **Salon Moderne**, circle 427
6. 1996 Arabesque **Groupe Lacasse**, circle 428
7. 1993 Procession **Judy Ross**, circle 429

## flooring

**Soroush Custom Rugs**  
LifeGuard! **Tidal Dreams** is a tsunami of a design on Axminster carpet creating waves in the competitive field of custom area rugs. Designers could get swept away with the choice of unlimited pigments and scale. 10400 Connecticut Avenue, First Floor, Kensington, MD 20895; 800-483-9955; [soroush.us](http://soroush.us). circle 694



### Judy Ross

Judy Ross partners with Amy Lau to create **Loop**, a lyrical design—in shades of celadon, cream, mint, seafoam, and spring green—which is refreshing and available in hand-knotted Tibetan wool or chain-stitched with custom colors and sizes. 41 Union Square West, 907, New York, NY 10003; 212-842-1705; [judyrosstextiles.com](http://judyrosstextiles.com). circle 695

### Warp & Weft

The Lhasa series is handwoven in high-quality Himalayan wool with Indian mulberry-silk accents. Imaginative designs such as the Kashmiri shawl-inspired **Hana** are accurate renderings of nature, with delicate undulating fronds of Indian-style foliage against a vertically banded ground. Offered in standard or custom sizes and colors. 145 Madison Avenue, New York, NY 10016; 212-481-4949; [warpandweft.com](http://warpandweft.com). circle 696



### The Rug Company

Suzanne Sharp describes her style as modern, emotional, and comfortable. Because she relishes the freedom to move elements around with every new idea, the area rug is a perfect example of her nomadic approach to decorating.

**Sellarsbrook** has a cut-pile pattern on a loop-pile background in yellow or blue. 8202 Melrose Avenue, Los Angeles, CA 90046; 323-653-0303; [therugcompany.info](http://therugcompany.info). circle 698



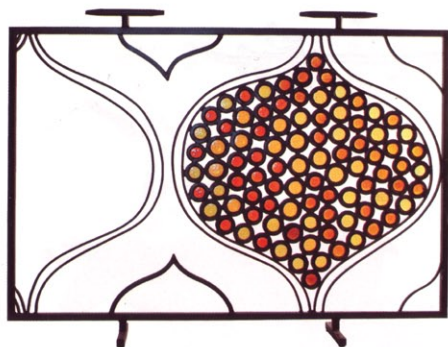
### Beaulieu Commercial

From any viewpoint, **Sideways** and **Connex** are superior stripes. Horizontal bands and multi-linear geometrics enliven this textured carpeting (1/8 gauge, cut loop, yarn dyed), available in such varied tones as gray and yellow-green or red umber and persimmon. It measures 12 feet wide, with a 72-inch-square repeat. 201 Princeton Boulevard, Adairsville, GA 30103; 800-451-1250; [beaulieucommercial.com](http://beaulieucommercial.com). circle 697



**Judy Ross**  
**Spray** and **Carousel** pillows are this Manhattan textile designer's graphic reinterpretation of flower blossoms and lace. Hand-embroidered with silk thread, the 18-inch-square wool pillows are available in 60 color combinations. 41 Union Square West, 907, New York, NY 10003; 212-842-1705; [judyrosstextiles.com](http://judyrosstextiles.com).

circle 835



## Philip Nimmo Ironworks

A book on Moroccan style that Philip Nimmo found while traveling inspired the soft organic design of his **Mattonella** fire screen. The artist pairs amber and yellow glass orbs with wrought-iron curves to striking effect. He produces each screen on a custom basis, sized to fit up to 36 inches high and 42 inches wide. 710 North Orlando Drive, 101, Los Angeles, CA 90069; 323-653-5654; [philipnimmoironworks.com](http://philipnimmoironworks.com). circle 840



## Sieger Design

The eggcup breaks out of its dull shell and goes glam with Sieger Design's sculptural **Matroschka** holder, which is, at about 6 inches high and 4 inches in diameter, the same size as an ostrich egg (though intended to hold a chicken's). Crafted of porcelain, the eggcup comes in luxe finishes including platinum, Cushion, gold, and white. 7 West 34th Street, New York, NY 10001; 212-453-4680; [sieger.org](http://sieger.org). circle 836

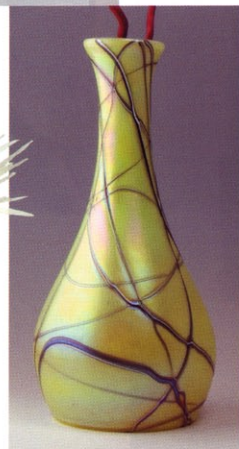


## Marco Morosini

For the modernist canine, Italian designer Marco Morosini introduces the transparent **Dog Is a God** house. Hip pooches will appreciate its acrylic resin and wood construction and Philip Johnson aesthetic. The collection also includes a pagoda house, a mini trailer, a plastic cube with a red armchair, and an over-size suitcase house for hounds on the go. 40 Via Fabbrecca, 61100 Pesaro, Italy, 39-07-2128-3588. [marcomorosini.com](http://marcomorosini.com). circle 837

## J Schatz

**This & That** salt and pepper shakers add flavor to the table in more ways than one. In shiny happy colors and playful forms, each oversize dispenser: 7 inches high and large enough to hold 26 ounces of salt or 9 ounces of pepper. The ceramic sets are available in four complementary-color sets: aqua and walnut brown, Orange Peel and Tide-pool, olive and plum, and black and white. 5 South Chenango Street, Greene, NY 13778; 866-344-5267; [jschatz.com](http://jschatz.com). circle 839



## Fusion Z

Glass artist Igor Muller evokes the flowing patterns of Mediterranean aquatic plants with his mouth-blown **Seaweed** vase. Crafted in the Czech Republic, each piece owes its iridescence to a fuming of titanium, stands 19-inches high, and comes in blue or chartreuse. P.O. Box 1285, Healdsburg, CA 95448; 707-433-8797; [fusionz.com](http://fusionz.com). circle 838